

PORTICO



Lakeside Elevation

- Architect: Mitch Ginn
- Four bedrooms, four full and one half bathrooms
- Open kitchen-dining-living space with vaulted living room
- Screened back porch with summer kitchen
- Lower terrace steps down to the lakeside elevation
- Primary suite and guest suite on main level
- Two additional guest suites and bunks on upper level with balcony overlooking main
- Attached double garage
- 3,506 sq. ft. of conditioned space



Street Side Elevation

Price: Pricing will depend on final features and lot selection.

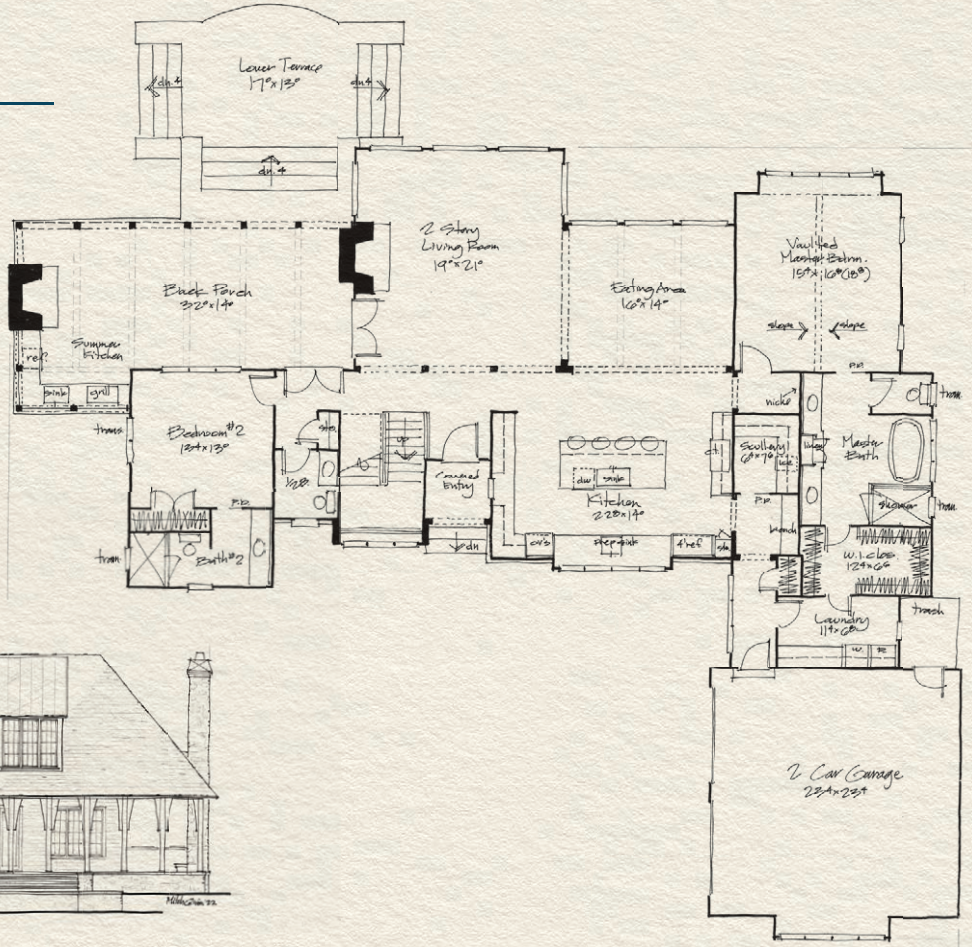
For additional information about Russell Lands neighborhoods,

call 256.215.7011 or visit RussellLands.com.

Main Level

PORTICO

2,455 Heated Sq. Ft.



Upper Level

PORTICO

1,051 Heated Sq. Ft.

