



# GLYNN VIEW COTTAGE



*Lakeside Elevation*

- Architect: Mitch Ginn
- Four bedrooms and four and one-half bathrooms
- Primary suite on main level with access to covered patio and sun porch
- Upper-level living with three guest suites
- Expansive open kitchen-dining-living area with fabulous lake views
- Upscale appliance package
- Handsomely crafted stone fireplace
- Two-car garage linked to mudroom
- 2,430 sq. ft. of conditioned space



*Street Side Elevation*

PRICE: Pricing will depend on final features and lot selection.

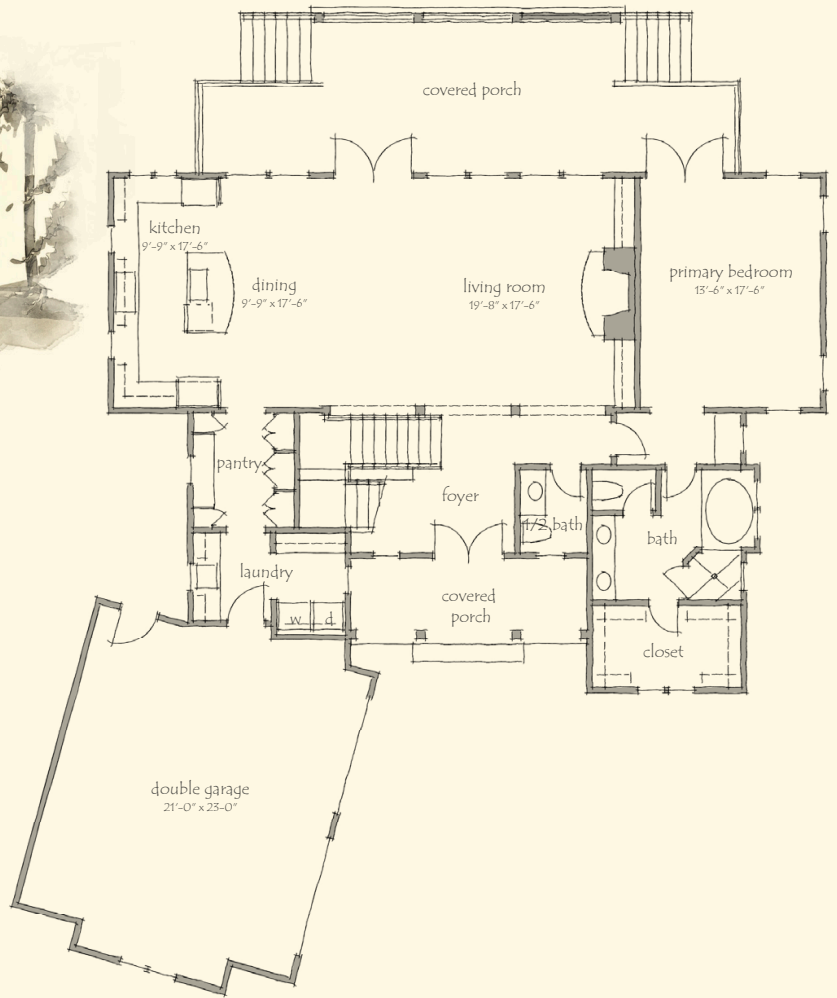
For additional information about Russell Lands neighborhoods, call 256.215.7011 or visit [www.RussellLands.com](http://www.RussellLands.com).



*Main Level*

GLYNN VIEW COTTAGE

1,598 Heated Sq. Ft.



*Upper Level*

GLYNN VIEW COTTAGE

832 Heated Sq. Ft.

